



D3PM

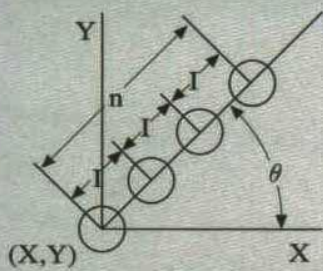
Key features for the table:

- Max. material size: 500x1000x18mm.
- Two 500W Mitsubishi Servo motors with adjustable motor speed for various material sizes.
- New hydraulic clamps for improved grip of material.
- Sensor for the air-oil booster to ensure clamping pressure.
- Ball transfer units on the support table.
- Maximum table travel speed without load: 10m/min.
- Table accuracy without load: $\pm 0.05\text{mm}$.

Key features for the controller:

- Incorporate G code programming for advanced features.
- Four pre-programmed patterns: line, array, arc, customize holes.
- Selection of tooling: one of the 3 punches or drill within each pattern.
- Store up to 100 programs each of combination of up to 6 patterns.
- Large color screen and USB port for improved connectivity.

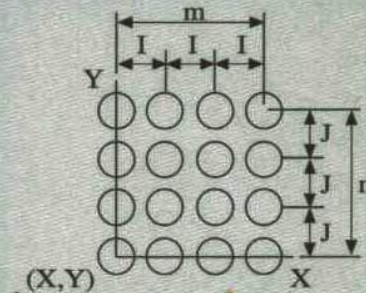
Line



Unit:(101-150) : [101]

X:[0000.00]
Y:[0000.00]
I:[0000.00]
 θ :[000.00]
n:[00]
tool:[]

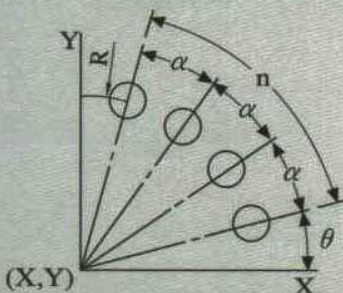
Array



Unit:(151-200) : [151]

X:[0000.00]
Y:[0000.00]
I:[0000.00]
J:[0000.00]
n:[00]
m:[00]
tool:[]

Arc



Unit:(201-250) : [201]

X:[0000.00]
Y:[0000.00]
R:[0000.00]
 θ :[000.00]
 α :[000.00]
n:[00]
tool:[]

Customize

Unit:(251-300) : [251]

Step	X	Y	tool:[]
1	[0000.00]	[0000.00]	
2	[0000.00]	[0000.00]	
3	[0000.00]	[0000.00]	
4	[0000.00]	[0000.00]	
5	[0000.00]	[0000.00]	